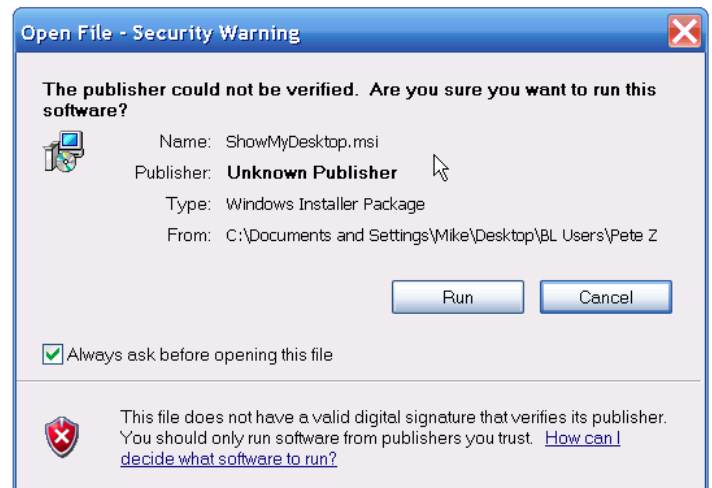


Installing BrideLive's Show My Desktop Plug-in for Windows.

1. [Click Here](#) to Download the ShowMyDesktop Installer.  
(or copy and paste this URL into your web browser) [http://www.livecloudevents.com/support/SMD-3.1.5\\_win.zip](http://www.livecloudevents.com/support/SMD-3.1.5_win.zip)
2. Locate the file you've just just downloaded called "ShowMyDesktop.msi", typically in your **Downloads** folder, or on your **Desktop**.

3. Double-click ShowMyDesktop.msi to open the installer. You may see the typical Security Warning, if so Click **"Run"**.



4. Once the Installer Wizard opens, Click **Next** and continue with the installation.
5. When the installer has finished, **Restart** your PC to complete the installation.

That's it! You're ready to begin using the Show My Desktop feature of BrideLive.

